



CASSIOPEIA GLOBALS LTD.



DENTURA BOX



## Cassiopeia Globals Ltd

**Distributor of Premium Surgical & Dental Instruments**

27 Revesby Road, Carshalton, England, SM5 1ES

[www.cassiopeialglobals.com](http://www.cassiopeialglobals.com)

Cassiopeia Globals Ltd is a UK-based distributor dedicated to supplying **high-quality surgical and dental instruments** to healthcare professionals across the globe. Our product range is manufactured under strict compliance with **ISO 13485** and **ISO 9001 quality management systems**, ensuring consistency, safety, and performance.

All instruments distributed by Cassiopeia are:

- **CE Certified**
- **UKCA Marked**
- Crafted from **high-grade AISI 420 stainless steel**
- Finished in a **non-reflective matte surface** for improved grip and hygiene
- Fully **autoclavable and corrosion-resistant**

We specialize in comprehensive instrument kits and surgical packs designed to streamline clinical workflows and enhance patient care.

## The Dentura Box – 40-Piece Dental Instrument Starter Pack

The **Dentura Box** is a professionally curated 40-piece dental instrument set, ideal for general dentists, dental students, oral surgeons, and mission-ready mobile clinics.

### Key Features:

- **All-in-One Kit:** From diagnostics to surgical tools, it's your complete dental starter solution.
- **Precision-Engineered:** Made from **AISI 420 stainless steel** with **matte finish** to reduce glare and ensure excellent handling.
- **CE & UKCA Certified:** Each instrument meets rigorous EU and UK standards for medical devices.
- **ISO Accredited Manufacturing:** Instruments are produced under **ISO 13485 & 9001** protocols for assured quality and safety.
- **Cost-Effective:** Saves time and money compared to purchasing instruments individually.

## INSTRUMENT DESCRIPTIONS – USAGE & BENEFITS

(ALL INSTRUMENTS BELOW ARE AISI 420-GRADE MATTE STAINLESS STEEL,  
CE/UKCA CERTIFIED, ISO 13485:2016 & ISO 9001:2015 COMPLIANT.)

### EXTRACTION FORCEPS

#### 1.FIG.1 – UPPER ANTERIORS

USE: EXTRACTION OF CENTRAL/LATERAL INCISORS AND CANINES

BENEFITS: NARROW BEAKS FOR PRECISION AND REDUCED TRAUMA



#### 2.FIG.7 – UPPER PREMOLARS

USE: SECURE REMOVAL OF UPPER PREMOLARS

BENEFITS: ANGLED BEAKS REDUCE COLLATERAL SOFT TISSUE INJURY



#### 3.FIG.13 – LOWER PREMOLARS

USE: EFFICIENT LOWER PREMOLAR EXTRACTION

BENEFITS: ENHANCED CONTROL WITH ANATOMICAL BEAK DESIGN





## INSTRUMENT DESCRIPTIONS – USAGE & BENEFITS

(ALL INSTRUMENTS BELOW ARE AISI 420-GRADE MATTE STAINLESS STEEL,  
CE/UKCA CERTIFIED, ISO 13485:2016 & ISO 9001:2015 COMPLIANT.)

### 4.FIG.18A – UPPER MOLARS

USE: FOR MOLAR EXTRACTIONS IN THE MAXILLA

BENEFITS: BROAD, SERRATED BEAKS PROVIDE A FIRM GRIP



### 5.FIG.22 – LOWER MOLARS

USE: MANDIBULAR MOLAR EXTRACTION

BENEFITS: OPTIMIZED FORCE DISTRIBUTION PREVENTS FRACTURES



### 6.FIG.74 – LOWER ANTERIORS & ROOTS

USE: FOR NARROW ANTERIOR TEETH AND ROOT TIPS

BENEFITS: SLIM PROFILE ENABLES ATRAUMATIC EXTRACTIONS





## ELEVATORS

7. CRYER ELEVATOR – RIGHT

8. CRYER ELEVATOR – LEFT

USE: ROOT ELEVATION PRIOR TO FORCEPS USE

BENEFITS: RIGHT/LEFT MIRRORED DESIGN ALLOWS SOCKET-SPECIFIC LEVERAGE



LEFT



RIGHT



# PERIODONTAL INSTRUMENTS

9.LUCAS CURETTE FIG. 85

10.LUCAS CURETTE FIG. 86

USE: DEBRIDEMENT AND CURETTAGE  
BENEFITS: ANGLED CURETTES ENHANCE  
REACH AND CONTROL



## 9.MOLT UNIVERSAL PERIOSTEAL ELEVATOR FIG. M8

USE: FLAP REFLECTION, TISSUE SEPARATION

BENEFITS: DUAL WORKING ENDS FOR  
MULTI-USE FLEXIBILITY





## DIAGNOSTIC & RESTORATIVE INSTRUMENTS

### 12.SINGLE-ENDED PROBE SOLID HANDLE FIG. 9

USE: CARIES DETECTION, POCKET DEPTH PROBING

BENEFITS: SHARP, TACTILE TIP WITH ERGONOMIC GRIP



### 13.HOLLENBACK 3 CARVERS

USE: CONTOURING AND CARVING RESTORATIONS

BENEFITS: CRISP ANATOMY FOR POSTERIOR RESTORATIONS



## DIAGNOSTIC & RESTORATIVE INSTRUMENTS

### 14.ENDO EXCAVATOR 32L

USE: DENTIN REMOVAL IN ENDODONTIC ACCESS

BENEFITS: SPOON TIP REACHES INTO CANAL ORIFICES EASILY



### 15.BURNISHER 26-30

USE: SMOOTHING OCCLUSAL SURFACES POST-FILLING

BENEFITS: ENSURES HIGH GLOSS AND COMPACTED MARGINS



## DIAGNOSTIC & RESTORATIVE INSTRUMENTS

### 16. BALDWIN 49 FILLING INSTRUMENT

USE: COMPOSITE/AMALGAM APPLICATION

BENEFITS: SLIM, PRECISE WORKING ENDS FOR POSTERIOR PACKING



## EXPLORERS

### 17. DOUBLE-ENDED EXPLORER INSTRUMENT #5 & #6

USE: SURFACE EXAMINATION, CALCULUS DETECTION

BENEFITS: FINE TIPS FOR TACTILE SENSITIVITY



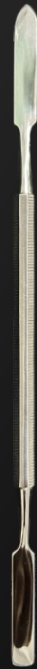


## MIXING TOOL

### 17.DOUBLE-ENDED CEMENT SPATULAS FIG. 2

USE: MIXING AND APPLYING CEMENTS

BENEFITS: TWO WIDTHS ACCOMMODATE VARYING VOLUMES



## PERIODONTAL TOOLS

### 19.HEIDBRINK APICAL ELEVATOR 13/14

USE: APICAL ROOT REMOVAL

BENEFITS: FINE CURVED ENDS FOR SURGICAL ACCURACY



## 20.OCHSENBEIN 1 PERIODONTAL CHISEL

USE: BONE CONTOURING & FLAP SURGERIES

BENEFITS: FLAT EDGE MAINTAINS CLEAN MARGINS



## SURGICAL INSTRUMENTS

### 21.FRIEDMAN BONE RONGEUR

USE: TRIMMING INTERSEPTAL AND ALVEOLAR BONE

BENEFITS: STRONG JAWS AND SPRING MECHANISM FOR SAFE USE



22.MALLET MEAD1 (19 CM)

USE: USE WITH CHISELS IN SURGICAL BONE REMOVAL

BENEFITS: CONTROLLED, BALANCED WEIGHT





## RETRACTORS, HANDLES, AND SYRINGES

### 23. MOUTH MIRROR + HANDLE NO. 5

USE: INDIRECT VIEWING, TISSUE RETRACTION

BENEFITS: FOG-RESISTANT REFLECTIVE SURFACE



### 24. LONDON COLLEGE TWEEZERS (15 CM)

USE: COTTON ROLL OR GAUZE PLACEMENT

BENEFITS: ANGLED TIPS ENHANCE ACCESS IN DEEP CAVITIES



## RETRACTORS, HANDLES, AND SYRINGES

### 25. ADSON TWEEZERS (12 CM, 1×2 TEETH)

USE: GRASPING TISSUE OR DRESSING

BENEFITS: FINE, TOOTHED TIPS PROVIDE SECURE HANDLING



### 26. DRESSING FORCEPS SERRATED (16 CM)

USE: DRESSING PLACEMENT/REMOVAL

BENEFITS: SERRATIONS PREVENT SLIPPING



## RETRACTORS, HANDLES, AND SYRINGES

### 27. GOLDMAN-FOX SCISSOR SAW EDGE STRAIGHT (13 CM)

USE: TRIMMING SOFT TISSUE

BENEFITS: SERRATED BLADE FOR NON-SLIP CUTTING



### 28. SPENCER SCISSOR ANGLED (11.5 CM)

USE: FINE DISSECTION IN CONFINED AREAS

BENEFITS: ANGLED BLADE ENHANCES SURGICAL REACH



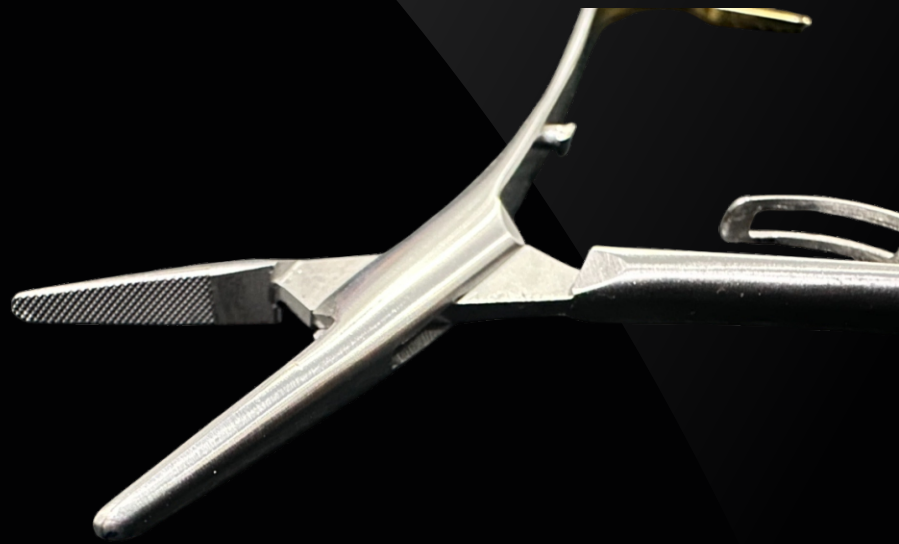
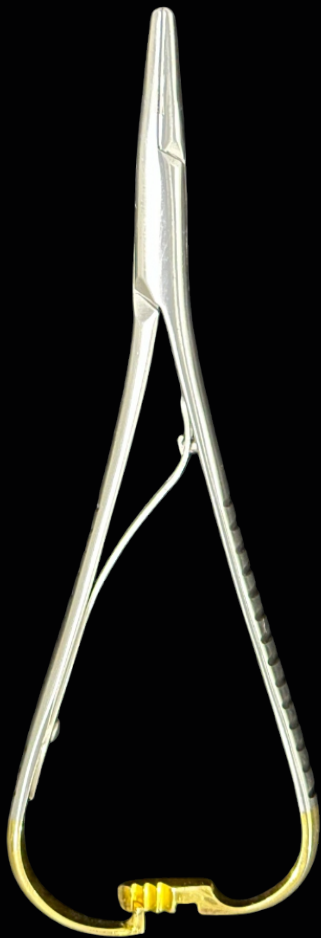


## RETRACTORS, HANDLES, AND SYRINGES

### 29.MATHIEU TC NEEDLE HOLDER (14 CM)

USE: SUTURING

BENEFITS: TUNGSTEN CARBIDE JAWS OFFER SUPERIOR GRIP



## RETRACTORS, HANDLES, AND SYRINGES

### 30. BACKHAUS TOWEL CLAMP (13 CM)

USE: SECURING DRAPES DURING SURGERY

BENEFITS: STRONG JAWS AND SPRING ACTION



## SCALPAL, GAGS, AND MISCELLANEOUS

### 31. SCALPEL HANDLE WITH SCALE FIG. 3 (12.5 CM)

USE: BLADE ATTACHMENT WITH MEASURED CONTROL  
BENEFITS: SCALE IMPROVES INCISION ACCURACY



### 32. SCALPEL HANDLE – 6-WAY ADJUSTABLE ANGLED

USE: CONTROLLED INCISIONS IN AWKWARD AREAS  
BENEFITS: MULTI-ANGLE ADAPTABILITY



## SCALPAL, GAGS, AND MISCELLANEOUS

### 33. MINNESOTA RETRACTOR (14 CM)

USE: CHEEK AND TONGUE RETRACTION

BENEFITS: BROAD BLADE PROTECTS TISSUE



### 34. DENTAL SYRINGE (2.2 ML)

USE: LOCAL ANESTHETIC DELIVERY

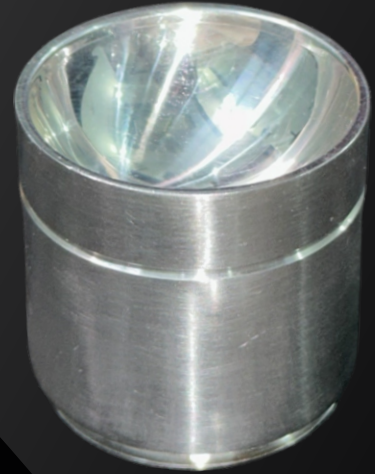
BENEFITS: ERGONOMIC THUMB RING AND BARREL



## SCALPAL, GAGS, AND MISCELLANEOUS

### 35.AMALGAM WELL

USE: HOLDING AND MIXING AMALGAM  
BENEFITS: STABLE AND DEEP DESIGN



### 36.MEASURING LOOP CASTROVIEJO ANGLED (17.5 CM)

USE: MEASURING CANAL DEPTH  
BENEFITS: ANGLED TIP FOR ERGONOMIC CONTROL





## SCALPAL, GAGS, AND MISCELLANEOUS

### 37. BRACKET POSITIONING STAR/BOON'S GAUGE

USE: ORTHODONTIC BRACKET HEIGHT POSITIONING  
BENEFITS: STAR TIPS PROVIDE ACCURATE CALIBRATION



### 38. MOUTH GAG MOLT (11 CM, BLUE COATED)

USE: JAW OPENING DURING PROCEDURES  
BENEFITS: NON-SLIP, ENAMEL-SAFE COATING



## SCALPAL, GAGS, AND MISCELLANEOUS

### 39.DISTAL END CUTTER

USE: CUTTING ORTHODONTIC WIRE ENDS  
BENEFITS: FLUSH-CUT TO PREVENT TISSUE DAMAGE



### 40.FRAZIER SUCTION TIP FIG. 6FR (15 CM, Ø2 MM)

USE: CONTROLLED SURGICAL SUCTION  
BENEFITS: NARROW BORE FOR PRECISION IN DEEP FIELDS





## Why Choose the Dentura Box by Cassiopeia Globals Ltd?

- **Regulatory Compliance:** CE, UKCA, ISO 13485, and ISO 9001 Certified
- **Clinical Versatility:** Instruments for diagnostics, surgery, and restorations
  - **Superior Steel Quality:** AISI 420 Stainless Steel with Matte Finish
  - **Ready-to-Use:** Fully sterilizable and professionally packed
- **Ideal for:** New clinics, outreach missions, training institutions, and daily general dentistry

 +44 7913 965695

 27 Revesby Road, Carshalton, England, SM5 1ES



<https://cassiopeiaglobals.com>